

# WOLF'S PLUMB BOB NEWS 2015

Issue Q 04 WINTER September 1, 2015

## PLUMB BOB NEWSLETTER

Author: Wolf Ruecker

www.plumbbobcollectors.info

Dear Fellow Collector,

Dear reader of the PLUMB BOB NEWS,

As always, I am searching for new material and information associated with plumb bobs.

Please feel free to share new photos, catalogs, articles or stories of a personal nature.

I welcome input from fellow collectors!

Wolf

## PLUMB BOB NEWSLETTER 2015- Q 04

### TABLE OF CONTENT

1. INTRODUCTION .....	87
2. PLUMB BOBS OFFERED ON EBAY 2007 to 2009 (selection).....	88
3. PAUL LEISTNER FAMILY NEWS.....	100
4. UNKNOWN MECHANICAL PLUMB BOB MADE IN St. Louis, MO .....	104
5. PLUMB BOBS FROM DALE RIEDESEL .....	107
6. REPAIRED TERAZI TRIANGLE PLUMB BOB.....	108
7. GREASE GUN PLUMB BOB .....	108
8. SOMETHING TO SMILE ABOUT .....	109
9. REMARK.....	110

### 1. INTRODUCTION

Dear Fellow Collector,

A few months ago, I reassessed the personal effort required to produce 12 monthly editions of "Wolf's Plumb Bob News" and decided to reduce production of my newsletter to one each quarter, rather than one/month. Since this edition will be my fourth newsletter this year, I realize that I have enough material to generate a fifth newsletter this coming December, which will be an abbreviated edition! Topics I have considered for my final 2015 abbreviated newsletter include:

- Alignment of front wheels on old cars
- The plumb bob in the film of Jules Verne "Journey to the Center of the Earth"
- Pins with pictures from plumb bobs
- The weight (plummet) of the chimney sweeper
- The word "plumb bob" or "plummet" in different expressions of each language
- The plumb bob in building aircrafts
- Other interesting topics which may arise during the next few months

**If YOU have topics or pictures you deem interesting for inclusion in my final December newsletter, please send them to me during the next few months – I will be happy to review them!.**

Today, I searched my archives, searching for the results of eBay auctions from the period between 2007 - 2009. Many of them are now in collections of

friends. I've added some comments for a better explanation.

Of special interest was correspondence from members of the Leistner family with news and a information from a collector about a unknown plumb bob with a very interesting internal reel mechanism. As always, I look forward to receiving feedback regarding such topics from the readers of my publication.

I received an email from a fellow names Clay, while on holiday:

*"A plumb bob we recently saw in Taif, Saudi Arabia, Clay"*

I love to receive such photos-please keep sending them to me! Not every plumb bob is PATENTED or MADE WITH EXPENSIVE MACHINES. ☺

Cheers

Wolfgang



2. PLUMB BOBS OFFERED ON EBAY  
2007 to 2009 (selection).

2007/1

A

B

C

D

1



2



3



4



5



6



**DESCRIPTION of photos 2007/1 on page 88**

- 1A Heavy brass with wooden spool. 88€
- 1B,C Miners lamp by B&S
- 1D Interesting decoration
- 2A Nicely turned and knurled top
- 2B Lignum vitae 11 inch
- 2C 36 GBP with wooden box. Parts

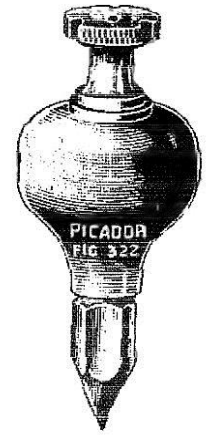


- 2D Stanley London
- 3A 23 pbs with display
- 3BC pb boxwood, brass, steel tip PINE HOLDER
- 3D British brass w initials \$23
- 4A,B ALFRIED SHIRLEY is a maker in England



**4C,D PICADOR made in England**

PICADOR produced between the 1950s and 1980s two types of bobs; TRADITIONAL as #322 323 324 325 in 60gr 80gr 100gr and 110gr. DIE CAST ZINC (DIE CAST LIGHT ALLOY) PARALLEL as #582 1/2 583 584 585 586 in 60gr 100gr 200gr 340gr 530gr Catalogues exist from 1963 and 1980. PICADOR is since Nov 2005 in liquidation.



- 5A PAUL LEISTNER \$67! Last month the same was sold for \$400
- 5B,C MOUNT TAI made in China
- 5D 3 inch brass filled with lead
- 6A,B Brass, old. From Bulgarie. 75€+sh
- 6C Chinese with IVORY inlet
- 6D Chinese boxed brass \$180

2007/2

A

B

C

D

7



8



9



10



11



12

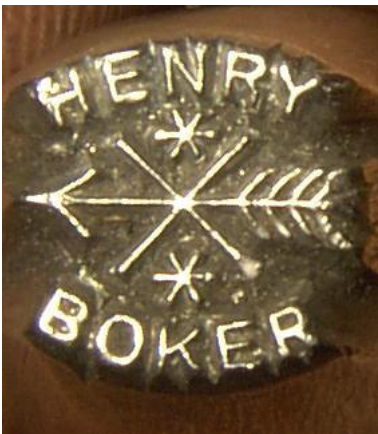


**DESCRIPTION of photos 2007/2 on page 90**

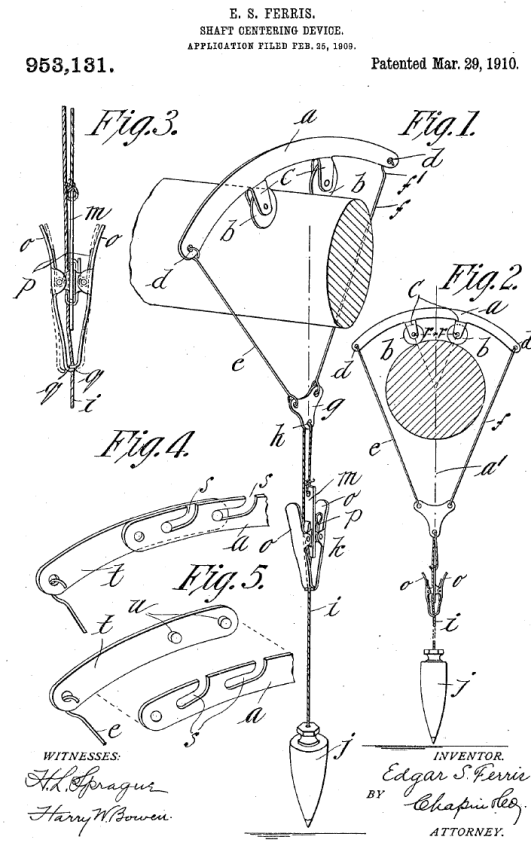
- 7A Chinese boxed brass \$180. It's an ink pot and not to storage for a plumb bob ☺
- 7B Chinese flying saucer. Often offered on EBAY.
- 7C Chinese brass egg. Top screw is NEW. Not a "born" plumb bob
- 7D 3 lbs 5 inch brass with spool
- 8A 32 mm dia. French carpenter plumb bob.
- 8B Turtle #5
- 8C England. Interesting thread / screw.
- 8D Highly ornated
- 9A,B Stanley like reel. 7 inch 2 lbs brass
- 9C,D Clinometer with plumb bob. Sold from New Zealand.
- 10A French with internal reel. 13 cm high, 5cm dia. Ring is the SPACER. 158€



- 10B French carpenter plumb bob
- 10C Brass 5 inch
- 10D 11A French carpenter plumb bob. Both sides.
- 11B Brass. 6 inch 3 lbs.
- 11C Henry Boker 10 Sold from Australia. Made by Gampper, Germany



- 11D Plomada bronze from Spain
- 12A,B Patent 1910. Ferris shaft centering device tools. Now in my collection



- 12 C Typical cast iron from PRESTON
- 12D 48 oz ornated

2007/3

A

B

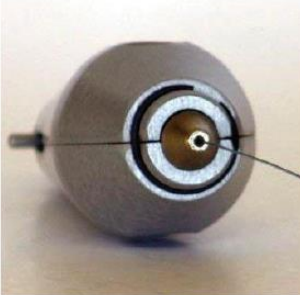
C

D

13



14



15



16



17



18



**DESCRIPTION of photos 2007/3 on page 92**

- 13A 10 inch, 76 oz. Huge
- 13B Ivory
- 13C Stanley like internal reel
- 13D Apple core shaped brass
- 14A Tip protection. Combination
- 14B,C Russian. Only two items are known.  
Parts see on the photo below.



- 14D,15A,B Miraculous! YOUNG & SONS brass plumb bob. Patent has not been found.
- 15C Brass 11 lbs, 12 inch, \$700+
- 15D,16A Brass hollow from Argentina, \$99
- 16B,C Brass. 8 inch, 5 lbs with brass reel
- 16D Extremely ornated
- 17A,B Iron with internal reel. \$182
- 17C PLUMB LITE signed by the inventor GRIFFIN. \$280
- 17D Bridge builders pb. 7 inch 4 lbs. Brass
- 18A,B Shield's patent. England. Another one was sold on eBay in 2010. It was from the shipyards on the river Clyde in Scotland.



- 18C,D France SCHUMFELL RELEVATEUR BREVETE \$250 USED TO FIND GOLD. Such an instrument was sold 2015 as Rare Antique SCHUMFELL MARITIME

COMPASS French Detector Pendulum in Original Box for \$460!

Here are some other photos:



2008/1

A

B

C

D

1



2



3



4



5



6





**DESCRIPTION of photos 2008/1 on page 94**

- 1A France, brass, 77 mm, marked 1000
- 1B,C Brass, unusual shape. Starting bid \$50
- 1D Postcard from Wisconsin. 2 masons with a long plumb board



- 2A Sold in New Zealand for \$265. 7 inch brass.
- 2B 224 € ANCIEN FIL A PLOMB FORME DE CLOCHE EN BRONZE
- 2C Netherlands. 25 € 1600 g 5 cm dia. To use as flat bottom pb or with a tip.



- 2D3A French bronze carpenter. 221€
- 3B,C French small pb with spacer. 142€



- 3D,4A Acorn shape. Hollow, filled with lead.
- 4B,C A.L. THOMPSON #3, 7 cm, 178€

- 4D Signed 1870, brass with cap, \$240
- 5A Marked with MERCEDES STAR. Gift by Mercedes for the clients on the exhibition BAUMA 1980 in Munich, Germany. This type was made by Gampper in nickel and GOLD PLATED



- 5B Robert and Brandi with hot pants. (Barbara is naked). Patent from 1998. Robert made in 16 oz, the girls in 12oz, 16 oz and 24 oz
- 5C BRASS 5 inch special top and big storage area. \$202



- 5D,6A Oldest patented US chalk line. Carter's May 28, 67 \$128
- 6B Old brass combination. \$35
- 6C,D French interesting shape; three parts



2008/2

A

B

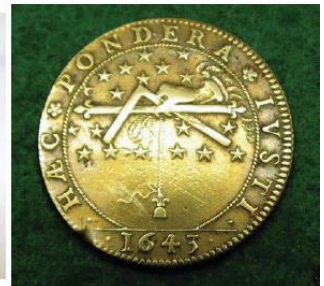
C

D

7



8



9



10



11



12



**DESCRIPTION of the photos 2008/2 on page 96**

7A Acorn, brass, 112 €



7B Helicopter pb as a joke ☺

7C HOLLOW SPHERE PENDULUM

7D,8A Wooden body and reel. 23€

8B Ivory 6 in x 2 \$765. After the law (ivory ban; selling of ivory items) in the U.S.A. is adapted to most of the other countries, you will no longer see eBay auctions with ivory plumb bobs. Looking back, here are some IVORY (or whale bone) PLUMB BOBS from the collection of my late friend Nelson:



- 8C Made of a pool billiard ball.
- 8D jeton cuivre HAEC PONDERA IUSTI 1643
- 9A French bell shaped 44€
- 9B LEISTNER surveyor's plumb bob
- 9C,D LEISTNER millwright's plumb bob sold in New Zealand for \$299
- 10A Wooden German plumb level 18€
- 10B Huge brass, \$250
- 10C Ivory described 1876
- 10D Ornatd brass with patina \$350
- 11A Cover: participated in Operation Plumbbob in 1957 at the Nevada Test Site
- 11B,C Signet, Germany, Mason detail (picture mirrored)
- 11D Plumb bob set in fitted wood case \$350
- 12A A French collector bought from China this nice brass shape for \$10 ☺
- 12B TILT MECHANISM (pendulum) from a pinball slot machine
- 12C Decorated brass \$56
- 12D Brass with tip protector and wooden case 203€

2009/1 **A**

**B**

**C**

**D**

**1**



**2**



**3**



**4**



**5**



**6**



**DESCRIPTION of photos 2009/1 on page 98**

- 1A \$289 6 in 40 oz brass. Unusual shape
- 1 B,C,D \$660 Brass plumb bob inside (1C).  
Prop(erty) of HUTCHINSON BROS, 14  
LIGHT ST. (Baltimore, MD)

Below a newsletter ad from Apr. 20, 1877  
Baltimore City Directory 1888: Jesse L. and C.  
Fred Hutchison, furnaces, ranges &c Light St.

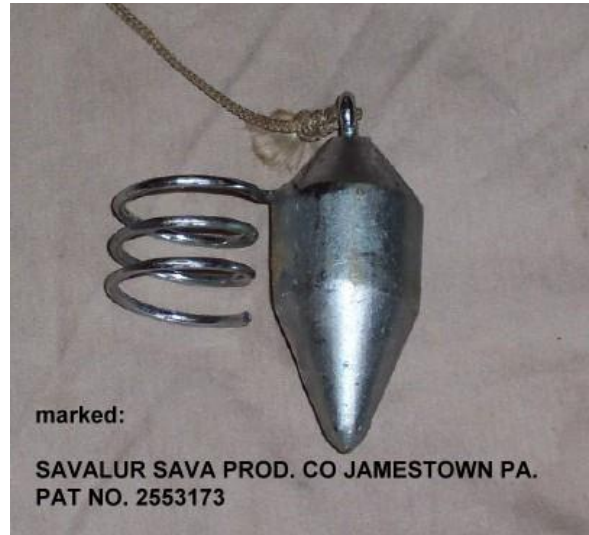


- 2A,B BRICKLAYERS, MASONS & PLASTERERS  
enameled PIN



- 2 C 63 GBP Brass with special HOOK
- 2 D OVB Our very best \$130
- 3 A,B Freemason. Member coin
- 3 C,D French maritime sounding weight
- 4A 12 GBP
- 4B John Laird Plumb bob 8 lbs 9 inches.  
More see my Newsletter 2010-05  
ENGLISH PLUMB BOBS Part 2

- 4C OFFERED AS line bob, but it is a FISH  
LURE RETRIEVER. Exist also as patent  
US2553173 in this shape



- 4D,5A,B Not a plumb bob,  
but a top of a  
helmet in the  
Prussia Army in  
the 1900s



- 5C Got information  
about this **PNTC** plumb bob from a  
friend in 2008. Thanks Wayne

*Hello Wolf,  
Every other year the PNTC (**Pacific Northwest  
Tool Collectors**) hosts a gathering called The  
Best in the West....This is usually a 3-4 day  
event and a large banquet is held on Sat. night.  
At the banquet---we as members of PNTC can  
receive up to two favors (which we have prepaid)  
... Wayne*

Additional Information from the Internet:  
It is a limited edition of 202 castings, sequentially  
serialized, boxed and labeled for presentation to  
full meeting registrants on August 19, 2000. The  
plumb bob design and art work was done by  
member and plane maker Christopher Laarman.  
Castings were done by Cranston Castings of  
Rhode Island. Machining, polishing, packaging  
and labeling was accomplished by a dedicated  
team of PNTC volunteers. This bob is bronze  
with a steel tip and is about 2 1/4" long and  
weighs about 4 ounces..

- 5D,6A,B SOLID BRASS TWIN SPHERE PLUMBOB
- 6C Wallpaper border with TOOLS. Now in  
my museum.
- 6D Advertising Aerated Concrete poured in  
plastic. Hebel-Gasbeton GmbH u. Co KG  
Postfach 1440 4520 Melle

### 3. PAUL LEISTNER FAMILY NEWS

As you know, Paul Leistner was a famous maker of excellent brass plumb bobs in St. Louis, MO and St. Charles, MO.

For more information regarding the Leistner's family and his business operations, view my web site on the page titled

“Heimbach and Leistner”:

#### **The German Art of Metalwork**

St. Louis and St. Charles Missouri

By Nelson Denny and Mike Urness.

This summer, I contacted Bob Allard, a member a member of the Leistner family. The following information I obtained from Bob revealed that Leistner's manufacturing operation was not confined to just making plumb bobs:

Some excerpts from my initial e-mail correspondence with Bob:

*“Hello, my wife is a granddaughter of Paul Gustav Leistner. We were delighted to see the work you have done both with the history of Paul Leistner's Manufacturing and also with the Churchbook records you researched. My wife has two of the plumb bobs. They are both small surveyor models. We also have a brass bed, four bed warmers and an ashtray from his company. We would love to find a few more plumb bobs. Can you advise how we might find some? Thanks for any help you can give,  
Bob Allard”*

Bob's second correspondence with Mike and I a few days later I learned more about Paul Gustav Leistner III's family and creative design and manufacturing pursuits:

*“Hi Mike and Wolfgang,  
Thanks for getting back to me. My wife Betty is the daughter of Paul Gustav Leistner III. Paul was born in St. Charles and moved to St. Peters after he married. He had some of the same creative and mechanical talents as his grandfather. He tinkered around and built things I believe while he was still in his teens. He supervised in one of the railroad car companies until they went out of business. He spent most of his years as a carpenter but had the knowledge and skills to work with a variety of materials. They had two daughters that survived to*

*adulthood. We have several tables and chests with inlaid designs that he made.*

*Shortly after Betty and I married we moved to Cincinnati, Ohio and a few years later to Murfreesboro, Tennessee where we now live.*

*There were **two brass beds**. One is a rounded headboard design that we have and the other is rectangular which Betty's sister has. I am not aware of any markings on them but will look more closely. ...*

*... Now Paul called them bed warmers. I had never seen the water bottle with the insert slot until seeing the patents. The basic shape we have is the same but the sides are solid without the slot in the side. These are marked 'patented 1911'. When I first saw the patent I thought Paul had taken his basic bed warmer and created an entirely new product.*

*More later,  
Bob”*

He also sent me some interesting photos of the family with some remarks and photos of things made in the Leistner factory.



The family photo has a notation that it was taken in 1940 or 1941

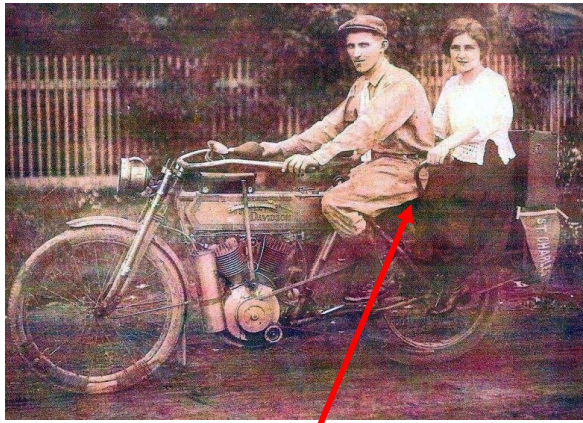
#1 Eugene Paul Leistner, born 1916

#2 Paul III Leistner (Gustav, called George), born 1917. Paul III is the father of Betty Allard, born Leistner.

#3 Paul Jr Leistner born 1889, the fourth son of Paul Gustav Leistner, born 1858 from Falkenstein, Germany

#3 is the husband since 1913 of #5 Eugenia Graslauf born 1892. The two are also sitting on the Harley-Davidson on the other photo but around 28 years earlier.

#4 Martha Maria Leistner, born 1915



The Harley-Davidson photo has a notation on the back that **Paul Jr. and Eugenia Graslaub** eloped, riding the motorcycle to Clayton, Missouri and that was the date of the photo. This was August 1913. (Aug. 30, 1913 they married)  
The **brass handlebars** were added by Paul Jr. for Eugenia to hold on to.

From a Harley web site:

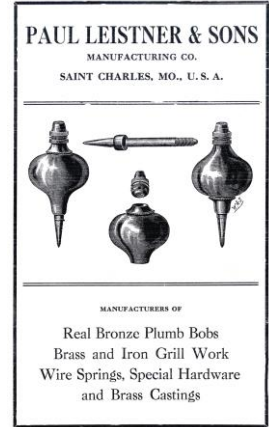
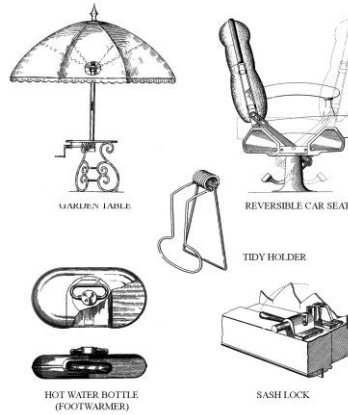


**Model 5-D (V-Twin) 1909**

The six-year-old Harley-Davidson Motor Company introduces its first V-twin powered motorcycle. With a displacement of 49.5 cubic inches, the bike produces seven horsepower. The image of two cylinders in a 45-degree configuration would fast become one of the most enduring icons of Harley-Davidson history. Also available for the first time from the Motor Company are spare parts for motorcycles.



We know that Paul Leistner made nice brass products as foot warmers, garden tables, fences or plumb bobs ...



- ... but I never heard of
- CANDLE HOLDERS,
- ASHTRAYS,
- BRASS BEDS
- PICTURE FRAMES and
- INLAID TABLES ...





The brass bed with rounded edges and a brass picture holder with a photo of Paul III with one of the inlaid tables he made.





Together with Bob Allard, I modified and updated the 2010 family record of the Leistner family in Germany before their

immigration to St. Louis in 1879, filled with information of the "Needle maker guild" in Auerbach and data from the internet.

Aus German newspaper „Vogtländischer Erzähler“ Jan/ Feb. 1936 „DIE NADLER-INNUNG in AUERBACH 1758“

Compiled by Wolf Ruecker [wolfg.ruecker@t-online.de](mailto:wolfg.ruecker@t-online.de)

Update July 9, 2015

June 2, 2015

Übersicht erstellt aus den Daten Des Handwerksbuches der Nadler-Innung Auerbach nach Brand 1758 bis 1833/1849. This record was made with the information in the Guild-book of the Needle-maker Guild Auerbach after the fire 1758 to 1833/1849

**Anmerkungen/REMARKS TRANSLATION**

L = Lehrling = becomes apprentice  
 G = Geselle = becomes journeyman, companion  
 M = Meister = becomes master  
 LH = Lehrbar = becomes master, instructor (erwähnt als.../ mentioned as...)  
 # ... = number of the church book page  
 Nr. ... = number in the article of the newspaper  
 \*187 = geboren = born  
 \*187 = gestorben = died

Innung = guild  
 Nadler = needle maker  
 Steuerliste = tax list  
 Mitgründer = Co-founder  
 Stifter = donor  
 Bürger = citizen  
 Brand = fire  
 Pflegeohn = foster son

**GEORG LEISTNER**  
 Kaml680 aus Nürnberg. 1688 Steuerliste Auerbach  
 Mitgründer der Nadler-Innung Auerbach -1717  
 Stifter 1758 für neues Inventar nach dem Brand 1757

**JOHANN ANDREAS LEISTNER**  
 \*Sept. 1718 Auerbach † Oct. 31, 1798  
 Married 1744  
 Stifter 1758 für neues Inventar nach dem Brand 1757  
 L = ?; G = ?; M = ?  
 LH = 1759-1794 Nr. 3, 10, 16, 115

**Maria Christina Zimmermann**  
 Married 1744  
 One daughter Johanna Christina

**JOHANN GEORG LEISTNER**  
 \* ca. 1720; † June 13, 1771 Auerbach  
 Stifter 1758 für neues Inventar nach dem Brand 1757

**JOHANN GEORG LEISTNER**  
 Bürger und Nadler-Meister  
 \* 1750 Auerbach † June 22, 1798 Auerbach (48J)  
 L = ?  
 G = ?  
 M = ?  
 LH = 1784 - 1797 Nr. 9, 13, 21, 22

**CARL GOTTLÖB LEISTNER**  
 Auerbach  
 L = ?  
 G = 1777 Nr. 237  
 M = 1783 Nr. 237  
 LH = 1798-1806 Nr. 34, 104; 144, 150  
 Übernahme der Lehrlinge nach Tod von Bruder Johann Georg Leistner 1798

**CARL LUDWIG LEISTNER**  
 AUERBACH  
 L = ?  
 G = 1776 Nr. 237  
 M = 1783 Nr. 237 Nr. 24  
 LH = 1791-1823 Nr. 14, 17, 29, 37, 38, 40, 44, 45, 54, 58, 140  
 C.L.L. has a son J.G. Treibmann before he married Johanna Christiane, born Pippig from Plauen

**(JOHANN) ERNST LEISTNER**  
 Auerbach  
 L = 1806 Nr. 34  
 G = 1809 Nr. 162  
 M = 1813 Nr. 264  
 LH = 1815 bis 1840 Nr. 50, 55, 57, 61, 78, 89

**JOHANN GEORG LEISTNER (Junior) (Hans-Görg)**  
 Bürger und Nadelmacher Married Sept. 17, 1809 Christiane Sämann  
 \* Oct. 9, 1783 #43 Auerbach; † Nov. 21, 1848 56J  
 L = 1797 Nr. 22  
 G = 1799 Nr. 144  
 M = 1802 Nr. 249  
 LH = 1802-1837 Nr. 31, 49, 50, 60, 62 71  
 Ur-ur-großvater von Martha Weidenmüller, geb. Weller (s. Text in Zeitung 1936)

**CARL GOTTLÖB LEISTNER**  
 AUERBACH  
 L = 1799 Nr. 24  
 G = 1801 Nr. 151  
 M = 1809 Nr. 256  
 LH = 1839 Nr. 88

**CARL AUGUST LEISTNER**  
 AUERBACH  
 L = 1807 Nr. 37  
 G = 1809 Nr. 163  
 M = 1813 Nr. 261  
 LH = 1818-1834 Nr. 5, 3, 68, 70, 73

**JOHANN GOTTLÖB TREIBMANN**  
 AUERBACH  
 illegitimate son  
 L = 1795 Nr. 17  
 G = 1799 Nr. 143  
 M = 1805 Nr. 253  
 LH = ?

**ERNST LEISTNER**  
 Auerbach  
 L = 1836 Nr. 78  
 G = 1838 Nr. 206  
 M = ?  
 LH = 1849 Nr. 112

**CARL LEISTNER**  
 Auerbach  
 L = 1840 Nr. 89  
 2 years apprenticeship  
 G = 1842 Nr. 212  
 M = ?  
 LH = ?

**JOHANN GEORG LEISTNER**  
 \* 1810 AUERBACH #114  
 Opa v. Martha Weidenmüller  
 Married Enders, Karlina  
 With 14 years apprentice  
 L = 1824 Nr. 60(2 years)  
 G = 1827 Nr. 186  
 M = ?  
 LH = ?  
 Gründete in CHEMNITZ  
 1937 die Firma: „J.G. Leistner, Chemnitz“  
 Haus- und Küchengeräte Fabrik

**CARL FRIEDRICH LEISTNER**  
 Born \* 1814  
 AUERBACH #13  
 With 15 years  
 L = 1827 Nr. 62  
 (2 years apprx.)  
 G = 1830 Nr. 189  
 M = ?  
 LH = ?  
 6 sons, 2 (eldest + youngest) needle makers

**KARL GOTTLÖB LEISTNER**  
 Married Leonhard, Christine  
 \* June 23, 1819  
 AUERBACH #77;  
 + Sept. 30, 1878  
 FALKENSTEIN  
 With 14 years  
 L = 1833 Nr. 71  
 3 years  
 G = 1836 Nr. 199  
 M = ?  
 LH = 1847 Nr. 108

**FRANZ LUDWIG LEISTNER**  
 \* 1822  
 AUERBACH #54;  
 With 15 years  
 L = 1837 Nr. 81  
 (2 years)  
 G = 1840 Nr. 209  
 M = ?  
 LH = ?

**T  
Ö  
C  
H  
T  
E  
R**

**FRIEDRICH AUGUST LEISTNER**  
 AUERBACH (Pflegesohn)  
 L = 1839 Nr. 88  
 (2 years apprenticeship)  
 G = 1842 Nr. 213  
 M = ?  
 LH = ?

**CARL AUGUST LEISTNER**  
 AUERBACH  
 L = 1829 Nr. 68  
 (2 years)  
 G = 1832 Nr. 195  
 M = ?  
 LH = 1840 Nr. 93

**CARL GUSTAV LEISTNER**  
 AUERBACH  
 L = 1834 Nr. 73  
 (2 years)  
 G = 1836 Nr. 200  
 M = ?  
 LH = 1840 Nr. 94

**CARL FRIEDRICH LEISTNER**  
 AUERBACH  
 L = 1832 Nr. 70  
 (2 years)  
 G = 1834 Nr. 198  
 M = ?  
 LH = ?

**FRANZ LEISTNER** \* ? † 1916  
 Nadelleistnerfabrikant in CHEMNITZ  
 Sein Sohn verlegte Firma nach GRÜNAU als Firma „Sächsische Nadelleistnerfabrik Paul Leistner“

**LOUIS OSCAR LEISTNER**  
 \*Feb. 14, 1848 Falkenstein  
 † May 20, 1923 Falkenstein  
 Married: Auguste Wilhelmine Mangold \* Dec. 23, 1846

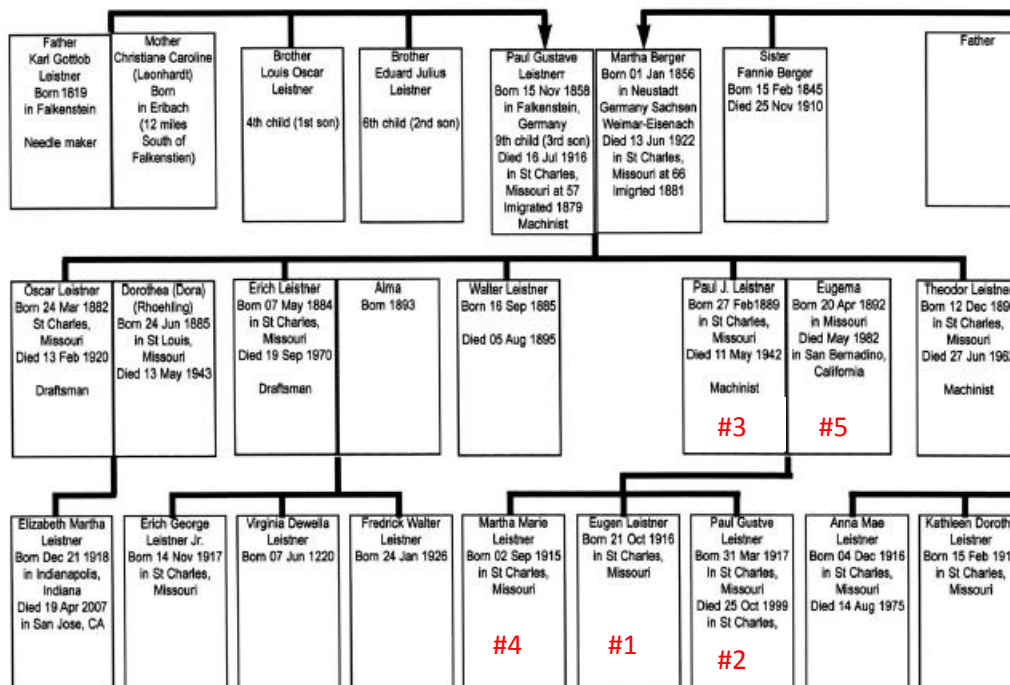
**PAUL GUSTAV LEISTNER**  
 Falkenstein #48  
 Born \* Nov. 15, 1858;  
 † July 16, 1916 St. Charles  
 Immigrated U.S.A. 1879

**CARL AUGUST LEISTNER**  
 AUERBACH  
 L = 1840 Nr. 93; (2 years) G = 1843 Nr. 216  
 M = ?  
 LH = ?

The following "American part" see Public Record for Family of Martha Berger & Paul Gustav Leistner by John Messina San Jose, CA 95151

**Public Record for the Family of Martha Berger & Paul Gustave Leistner**

(Compiled April, 2010, please send additions/corrections to John Messina PO Box 51148 San Jose, CA 95151)



Remark:  
 Members of the Leistner family depicted in the photo are identified by their order of appearance by red numbers in the family tree.  
 #1 to #5

Note: Family information beyond this level could be used for identity theft at this time

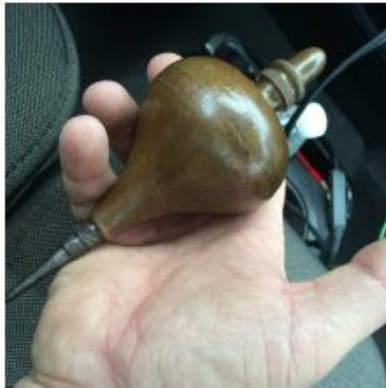
#### 4. UNKNOWN MECHANICAL PLUMB BOB MADE IN St. Louis, MO

This story started with a short email from Robbie, the tool collector near St. Louis, MO, U.S.A who briefly owned the plumb bob:

*“Partial label inside top part from St Louis, MO. I cannot make out the maker because the label is partially missing. Any help identifying the maker would be most appreciated. Label also says “Pat. applied for”“*

Attached some photos ....

1.3 kg / 2.8 lbs  
Diameter - 2.875 inches  
Tall - 7 inches



The rest of the label (position see red arrow in the picture above) reads ...GHS ... LOUIS, MO. .APPLIED FOR. (fig. below)



#### The FUNCTION:

When you pull out the line, the central rod is turning. To rewind the line you have to turn the rod by hand. Robbie the collector sent me a video about this function. Unfortunately we found no brake mechanism to stop and fix the line in a desired position and no spring of other mechanism to wind the line automatically.

When I published my Patent NEWS in 2007 I only found 3 (old) patents of plumb bobs with HORIZONTAL reels inside. Not from all of them I have a photo, some exist as patent drawing only. This was one that was not shown in any patent drawing before.

That was all information I had.



Left photo: A Heimbach millwright plumb bob,  
Right photo: The unknown mechanical type.

At first glance, the unknown plumb bob's general body shape and especially the cap looked very similar to a plumb bob made by Heimbach. in St. Louis in the 1880s. (See figs. above).

I authored a story with Nelson Denny and Mike Urness in 2008 titled "Heimbach and Leistner "HEIMBACH AND LEISTNER PLUMB BOBS" made in St. Louis and St. Charles. For the full story, please visit my web site. Joseph Heimbach worked in St. Louis between 1882 and 1896 (and worked together with Paul Gustave Leistner).

**Further investigation on the unknown mechanical plumb bob.**

The last letters of the name on the label were ...GHS. So I searched in Google PATENTS for an inventor in St. Louis ending with ...GHS. The only name that I found was BURROUGHS. However, a review of patent records revealed that **no plumb bob patents** were granted to WILLIAM SEWARD BURROUGHS. Detailed scrutiny of the plumb bob revealed the term 'Patent applied for', meaning WSB submitted a patent application, but possibly did not receive one from the US patent office..

Numerous patents are attributed to WSB, most related to **calculating machines**. Some other include:

No. 255,488 FOLDING COOP  
Filed Jan. 5, 1882 publ. March 28, 1882  
Assignor to Amos E. Colby

No. 370,313 PATTERN MAKERS TRAM  
Filed Sept. 29, 1886 publ. Sept. 20, 1887  
Assignor to the BOYER Manufacturing Co.  
Especially this patent shows that Burroughs invented measuring tools. (See fig. right)

No. 396,070 RIBBON WINDING DEVICE  
Filed Nov. 22, 1887 publ. Jan. 15, 1889  
ASS. TO THE AMERICAN ARITHMOMETER CO.

No. 388,119 CALCULATING MACHINE  
Filed Nov. 30 1887 publ. Aug. 21, 1888  
ASS. TO THE AMERICAN ARITHMOMETER CO.

No. 420,618 DEV. FOR RECORDING NUMBERS  
Filed July 11, 1888...publ. Feb. 4, 1890  
ASS. TO THE AMERICAN ARITHMOMETER CO.

No. 468,414 ELECTRIC ALARM CLOCK  
Filed Mar.25, 1890 publ. Feb. 9, 1892

No. 504,963 CALCULATING MACHINE  
Filed May 5, 1892 publ. Sept. 12, 1893  
ASS. TO THE AMERICAN ARITHMOMETER CO.

The BURROUGHS family:

**Edmund Burroughs** \* 1826, profession MECHANIC had two sons Charles and **William** (and daughters). He moved in 1881 or earlier (without his wife and daughters) from Auburn, New York to St. Louis, MO.

Edmund Burroughs was described as an "unsuccessful inventor". All the biographical accounts agree that **William Seward Burroughs** suffered from a "long and serious illness" and that the illness was Tuberculosis. Doctors recommended leaving the severe cold of Auburn winters for a milder climate. His move to St. Louis and the initial partnership with his father there was the result. The desire to build an **adding machine** that he had expressed earlier would now become an obsession.

Name of the model shop:

Edmund Burroughs & Son, Mechanics

In an ad 1881 we read "pattern maker for casting with 4 years experiences". That gives us a start in 1877 in St. Louis.

**E. BURROUGHS & SON,**  
**MECHANICS,**  
PLANNING, EXPERIMENTING AND ENGINEERING,  
MODELS, PATTERNS IN WOOD OR METAL,  
Light Manufacturing. General Jobbing, Printers' Job Work a Specialty.  
Promptness always.  
114 North Seventh Street, - - ST. LOUIS, MO.

Attest:  
*Edmund Burroughs*  
Edward Stear

Inventor:  
William S. Burroughs.



William showed an early talent for tool use and like his father, he was always building something.

A check of the St. Louis 1880 census records finds **William Burroughs** and his wife, Ida, living at 835 South Seventh Street. Burroughs' father Edmund is living there with them.

The 1880 St. Louis directory shows Edmund Burroughs as a mechanic operating his business at 114 N. 7th St and residing at 703 Chestnut.

In 1880 William came to St. Louis, and for a short time thereafter worked in his father's model shop on Pine Street. Later he worked for the Future Great Manufacturing Company, on Morgan Street, and still later for Hall & Brown, on Broadway, in the manufacture of wood-working machinery. His experience with his father and these two firms, covering in all a period of about three years, constituted his entire training in practical mechanics. He had, however, a genius for theoretical mechanics, and his experience in his father's shop brought him into contact with many inventors.

In 1886 he worked for Boyer Manufact. Co.

**Remark:** All articles in the internet about William S. Burroughs are specialized to his later invention of **ADDING MACHINES** for banks. So only few information talk about the time before or outside of this object.

J. O. Heimbach lived "next door" (in 1882) and 1883-1885. (see map of St. Louis above)

**Conclusion:** It could be that William S. Burroughs invented and made the plumb bob in the first years of his time in St. Louis 1881 -

1884. He needed money for his family and his work on the calculator and he worked in different factories.

On the other hand it could be that his father Edmund B was the inventor and maker of the mechanical plumb bob, however there was no other patent records to confirm so.

**Last step:**

Filling the **INCOMPLETE LABEL** with the name.

**It fits!**



Mike Urness, St. Louis, MO now is the owner of this plumb bob. He wrote to me: *"It is the most unusual and interesting bob I've seen in a long time and with that paper label having St. Louis on it, I just had to have it."*

**Next step:** He will ask the US Patent Office for information if there was a letter to the US PO in the 1880s by William S. Burroughs.

**Do YOU have such a plumb bob in your collection or do YOU know more about it?**

Thanks for an answer.

## 5. PLUMB BOBS FROM DALE RIEDESEL

Dale Riedesel, reader of my newsletter and a well-known collector from Twin Falls, Idaho sent me some photos of his collection, especially some of his small plumb bobs.

Dale has also a big collection of surveying instruments. On the photos below –that I found in my archive - is only a small part of the display shown.

Other plumb bobs are displayed in a niche / alcove.

**If YOU have some photos of your collection to show here in the newsletter, please send them.**

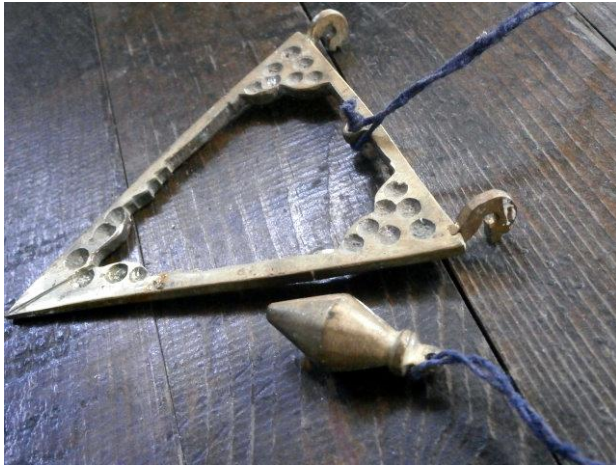


## 6. REPAIRED TERAZI TRIANGLE PLUMB BOB

From Bulgaria was offered in May a triangle plumb bob. We know this type as Ottoman or Anatolian plumb bobs TYPE 5, called TERAZI in Turkey. The 'buy it now price' was \$450. (Not really a bargain). When I looked at the photos I found that one of the two hooks was REPAIRED.

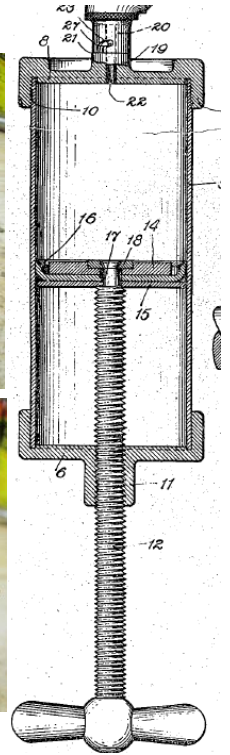
THIS IS OLD RARE ANTIQUE TURKISH PLUMB USED TO CHECK THE DEVIATIONS FROM THE HORIZONTAL ORIENTATION OF A BEAM. THE HOOKS FOR HANDING ARE STURDY, AND HAVE THE PLUMB BOB. IS ON MORE THAN 150 YEARS. IN PERFECT CONDITION, IN FULL SET. HAVE A TRACES OF BUILDINGS MATERIALS WHO ARE REMOUVABLE - I'M REST THEM BECOSE ITS MORE AUTHENTIC. PERFECT FOR COLLECTION OR DECORATION.

Pay attention when you will buy plumb bobs of this type. No problem to buy a repaired plumb bob, but the seller should mention it in the offer. He said: 'the hooks are sturdy' and 'in perfect condition' ☹



## 7. GREASE GUN PLUMB BOB

I bought from the USA a home-made plumb bob, made from a patented GREASE GUN.



June 24, 1919.

A. V. GULLBORG  
LUBRICATING APPARATUS  
Filed Feb. 11, 1918

1,307,733



The patent information is written on the body. Arthur Gullborg, Chicago is the inventor of this lubrication apparatus.

The tip is made from brass and not from steel. Weight is 1 lbs 11 oz. It looks good and it is working well!



## 8. SOMETHING TO SMILE ABOUT

On a box of beer bottles a PB-collector in California found a PLUMB BOB.

Thanks Chris



Here comes the story:

Stella Artois Premium Lager Beer has been brewed in Leuven, Belgium in the same tradition that can be traced back to 1366, using only the finest hops and malted barleys.

Over six hundred years of brewing expertise. Brewed by Stella Artois Brewery, Leuven, Belgium.

Did you also know that there's a special **9-step pouring process for Stella?**

It might sound crazy, but these guys are crazy about their beer, and they insist that it's the only way to guarantee a perfect glass:



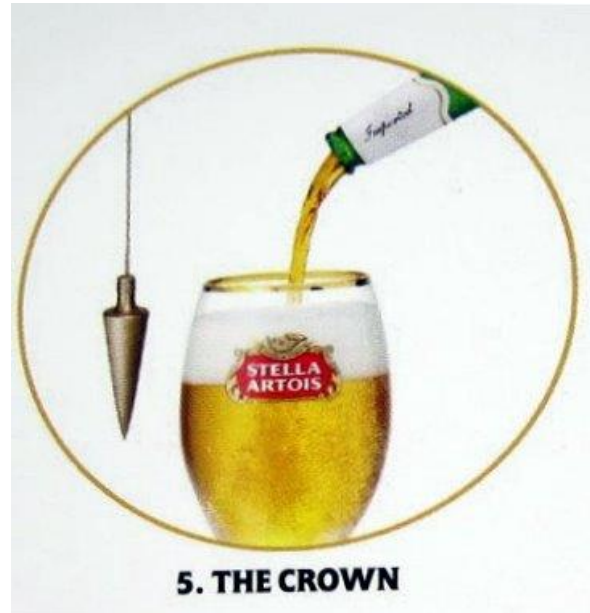
1. **The chill:** The beer should be chilled to and kept at about 36-38 degrees Fahrenheit.

2. **The purification:** The glass should be cleaned before serving

3. **The unveiling:** "She is a thing of beauty," so don't just open it up like any old beer. Be nice.

4. **The alchemy begins:** When you begin pouring the beer from the bottle into the chalice, hold the chalice at a 45-degree angle.

5. **The crown:** Once the beer is near the top (there's a line on the side of the chalice to indicate this), **turn it straight up** and finish pouring to give it a thick, foamy head.



6. **The beheading:** Using the flat edge of a knife, slice the extra foam off the top of the chalice.

7. **The judgement:** Make sure that the head is sufficient— it should cover the distance between that line on the side of the chalice and the very top.

8. **The cleaning:** Dip the bottom of the glass in water to remove any spilled beer

9. **The bestowal:** Place the chalice in front of the worthy recipient and watch as their eyes light up

To all plumb bob collectors:

*CHEERS, Prost, Santé, A la votre, Proost, Skål, Salute, Cin cin, Salud, Şerefe, στην υγειά σας ...*

**9. REMARK**

DEAR READER OF THE PLUMB BOB NEWS,  
DEAR FELLOW COLLECTOR,

This is an article of the regularly published WOLF'S PLUMB BOB NEWS that is sent on demand as PDF-file attachment by email. FREE.

You can see all former publications on the website [www.plumbbobcollectors.info](http://www.plumbbobcollectors.info) on subpage "download publications".

Remarks and contact by email: [plumbbobwolf@t-online.de](mailto:plumbbobwolf@t-online.de)

Enjoy it

Wolf Ruecker

*PS. This NEWSLETTER is also available in GERMAN /DEUTSCH.*



Logo of the IPBCA  
INTERNATIONAL PLUMB BOB  
COLLECTORS ASSOCIATION.  
For us THE WORLD TURNS  
AROUND THE PLUMB BOB